

**POSITIVELY DRIVEN**  
CONVEYOR BELTS



# CONFIGURATION

HORIZONTAL CONVEYOR



BIDIRECTIONAL CONVEYOR



FLIGHTED AND SIDEWALL CONVEYOR



SWAN-NECK CONVEYOR



TROUGHED CONVEYOR



# ADVANTAGES



Our positive drive homogeneous conveyor belts combine all the **advantages of modular belts and solid conveyor belts without the hygiene issues.**

Made of polyurethane or polyester elastomer, these belts are suitable **for most handling applications** in a variety of industries, particularly in the **food-processing industry.**



## OPTIMIZED OPERATION

- No risk of slippage, even in greasy and humid environments
- Belt operates without tension, reducing the stress on the conveyor's mechanical components: shafts, anti-friction bearings, roller bearing, etc.
- No need for tensioners
- Lightweight
- Silent operation
- High abrasion and tear resistance
- For belts fitted in pairs, the positive drive ensures synchronized operation
- Fully moulded teeth



## OPTIMAL HYGIENE LEVEL

- Fully EC-FDA compliant
- Solid impervious and rot-proof belt
- Labour and water saving
- Resistant to all common food industry chemicals including solvents, oils, greases...
- Suitable for scraper applications



# ADVANTAGES



## REDUCED PRODUCT CONTAMINATION

- Reduced risk of bacterial growth
- No fabric contamination removing the risk of fraying
- No detachable parts
- Reduced contamination risk



## LOWER OPERATING COSTS

- Long service life
- Quick and easy to clean without dismantling
- Significant reduction in water and detergent consumption
- Low maintenance costs



	MODULAR BELT	HOMOGENEOUS CONVEYOR BELT	POSITIVELY DRIVEN CONVEYOR BELT
Hygiene and cleanability	-	+	+
Durability and impact resistance	-	+	+
Lower consumption of water and detergents	-	+	+
No slippage	+	-	+
Belt weight	-	+	+
No belt tensioning system	+	-	+
Reduced stress on conveyor components	+	-	+
Suitable for scraper	-	+	+
Troughing application	-	+	+

# CHARACTERISTICS



Our positive drive belts comply with the **most stringent international standards**, and help maintain an optimal level of hygiene to **meet the HACCP\* requirements**, in the following fields:



Poultry



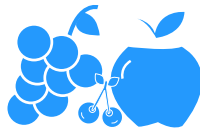
Meat



Fish



Cheese dairies



Fruit



Vegetables



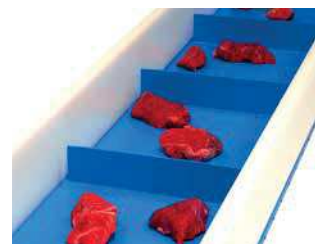
Bakeries- Industrial  
pastry-making



Ready meals



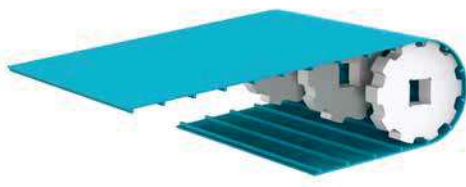
Frozen foods



\*HACCP : Hazard Analysis Critical Control Point



# CHARACTERISTICS



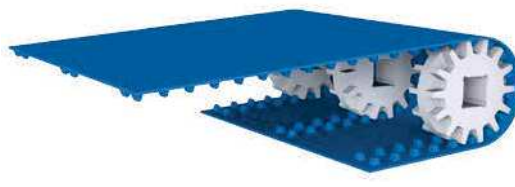
## DEL/DRIVE®

Positive drive

Direct retrofit  
on modular applications

Teeth over the entire width

Operation without tension



## POSITIVEBELT®

Self-tracking positive drive

Perfect tracking

Double rows of teeth

Operation without tension



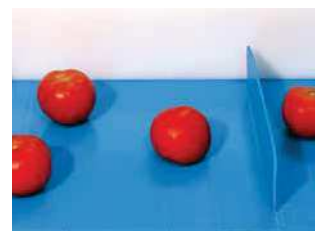
## DEL/SYNC®

Fully synchronous drive

Accurate positioning

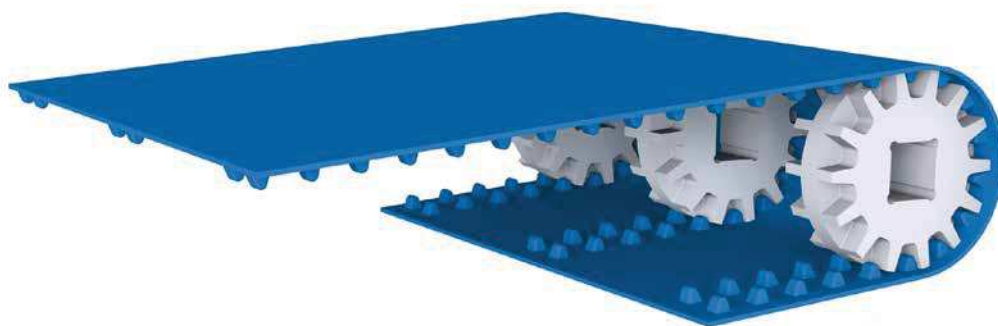
Centrally positioned teeth

Tensioned operation





## "SELF-TRACKING POSITIVE DRIVE BELT"



### POSITIVEBELT® P02

Reference	PO-331 LB2	PO-331 LB2H*
<b>Material</b>	<b>Polyurethane</b>	<b>Polyester elastomer</b>
Colour	Blue	Blue
Top surface	<b>Smooth</b>	<b>Smooth</b>
Hardness	95 ShA	55 ShD
Pitch (mm)	31.5	30.7
Thickness (mm)	3.2	3.2
Max. width (mm)	1 000	1 000
Weights	4.8 kg/m <sup>2</sup>	4.4 kg/m <sup>2</sup>
Min. pulley diameter (mm)	80	120
Min. pulley diameter - back flex (mm)	80	120
Temperature range	-20°C to +75°C	-20°C to +80°C
Traction force	70 daN at 3% elongation for a width of 200 mm	165 daN at 2,5% elongation for a width of 200 mm
<b>Friction coefficient</b>		
On HDPE bed	0.35	0.15
On stainless steel bed	0.6	0.45

\*Sprockets on demand.

# POSITIVEBELT®



The positive drive thermo-weldable POSITIVEBELT® offers **exceptional guidance thanks to the dual row of teeth**.

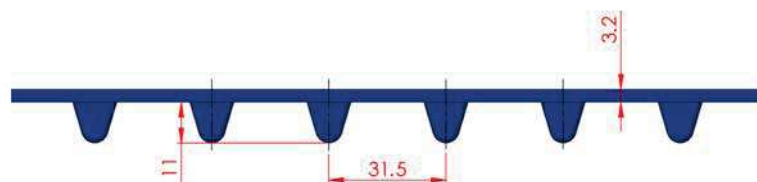
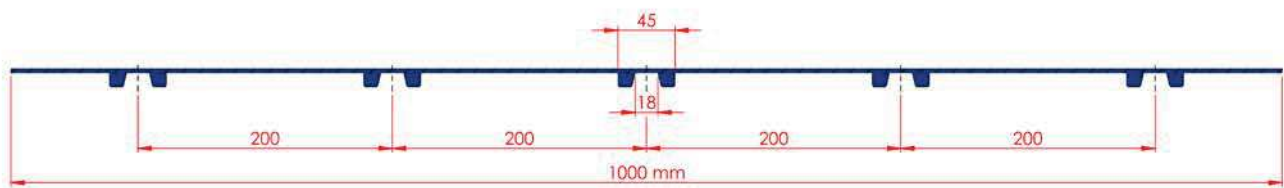
Its **perfectly smooth top surface** makes cleaning easier and maintains an **optimal level of hygiene**. The POSITIVEBELT® can benefit of an **antimicrobial treatment**. This treatment improves food safety by inhibiting the proliferation of bacteria, and prevents the contamination of transported products. A further benefit is the reduction of odours and cleaning cycles.

The POSITIVEBELT® has **high abrasion and cut resistance**, thereby **ensuring prolonged service life**.

The belt is mounted **without tension**, reducing stress on the mechanical components. It is driven by sprockets generally mounted on a square shaft or a smooth driving drum fitted with special sprockets.

The idlershaft is fitted with disks. Wheels can be added between the sprockets and the disks.

**Profiles or sidewalls** can be added (see page 18).







## SPROCKETS



REFERENCE	NUMBER OF TEETH	OUTER DIAMETER (mm)	MATERIAL	SQUARE BORE (mm)
P31WUN10C40	10	100	HDPE	40
P31WUN12C40	12	120	HDPE	40
P31WUN14C40	14	142	HDPE	40
P31WUN16C40	16	162	HDPE	40
P31WUN20C40	20	202	HDPE	40

## WHEELS



REFERENCE	EQUIVALENT NUMBER OF TEETH	OUTER DIAMETER (mm)	MATERIAL	SQUARE BORE (mm)
R31WUN10C40	10	100	HDPE	40
R31WUN12C40	12	120	HDPE	40
R31WUN14C40	14	142	HDPE	40
R31WUN16C40	16	162	HDPE	40
R31WUN20C40	20	202	HDPE	40

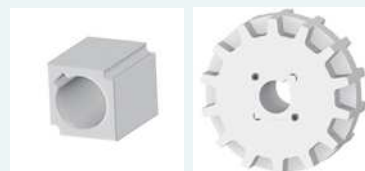
## DISKS



REFERENCE	EQUIVALENT NUMBER OF TEETH	OUTER DIAMETER (mm)	MATERIAL	SQUARE BORE (mm)
D31WUN10C40	10	100	HDPE	40
D31WUN12C40	12	120	HDPE	40
D31WUN14C40	14	142	HDPE	40
D31WUN16C40	16	162	HDPE	40
D31WUN20C40	20	202	HDPE	40

The standard sprockets we offer have a square bore for a 40x40 mm drive shaft.

**They can be mounted on other shafts with special adapters.**  
Please enquire for any other dimensions of round or square shaft.

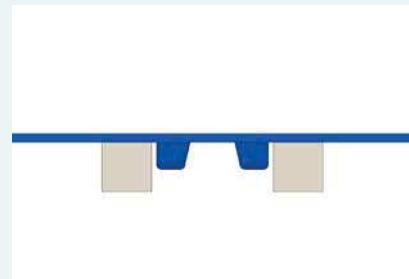




# POSITIVEBELT®

## Simplified conveyor design:

The POSITIVEBELT® is not only guided by self-tracking sprockets, but also be additionally guided within the sides of the conveyor. The belt tolerates transverse force, for such as lateral loading of products instance, without any risk of deviating.



An open overhanging design of the conveyor structure combined with the absence of belt tension facilitates regular mounting and dismantling tasks.

## SPROCKETS AND WHEELS FOR DRIVING DRUM



REFERENCE	PRODUCT	NUMBER OF TEETH	OUTER DIAMETER (mm)	DRUM DIAMETER (mm)	MATERIAL
P31WUN15R122	Sprocket	15	152	113	HDPE
R31WUN15R122	Wheel	-	152	113	HDPE
P31WUN18R147	Sprocket	18	182	138	HDPE
R31WUN18R147	Wheel	-	182	138	HDPE
P31WUN20R174	Sprocket	20	202	165	HDPE
R31WUN20R174	Wheel	-	202	165	HDPE

## The reinforced POSITIVEBELT® P01 is a version reinforced with aramid reinforcements.

It is particularly suitable for applications such as **roller drive**, requiring **good adherence**, a **high permissible load** even with **small widths**, while at the same time **eliminating the risk of slippage**.

The absence of a tensioning system lets you **retain fixed centre-to-centre distances**, **facilitating transfers between conveyors**.

Sprockets, wheels and discs: please enquire.



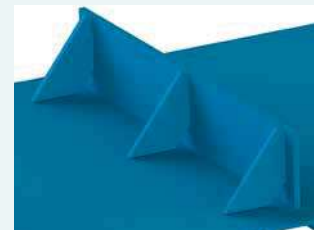
# ACCESSORIES



## PROFILES

- 2 types of profile: rounded and flat.
- The rounded base of the profiles makes belt cleaning easier and avoids bacterial development.
- Profiles can be high-frequency welded.\*
- Flight supports can be used to reinforce the profiles for heavy loads.

\* Except on the DEL/DRIVE® 50H belt and POSITIVEBELT® polyester elastomer, on which the profiles are hot fillet-welded.

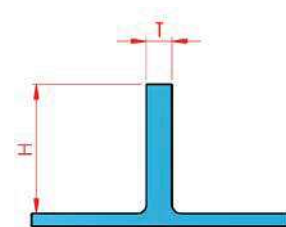


Flight supports

## FLAT PROFILES



T: THICKNESS (mm)	H: HEIGHT (mm)	MAX. WIDTH (mm)	MIN. PITCH (mm)
2	5 to 100	800	70
3	5 to 100	800	70
4	5 to 100	800	70
5	5 to 100	800	70

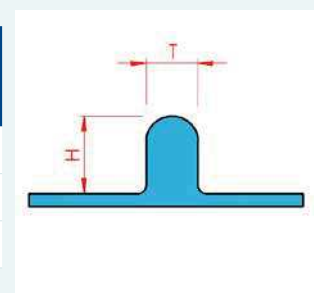


Please enquire for other thicknesses.

## ROUNDED PROFILES



T: THICKNESS (mm)	H: HEIGHT (mm)	MAX. WIDTH (mm)	MIN. PITCH (mm)
6	10	800	70
9	14	800	70
12	18	800	70



## SIDEWALLS

- For better containment of loose products.
- 20 to 80 mm high.
- Lateral trapezoid-shaped guides can be welded.
- The belt pulley diameter should be at least 2.5 times bigger than the height of the sidewalls.





# ACCESSORIES

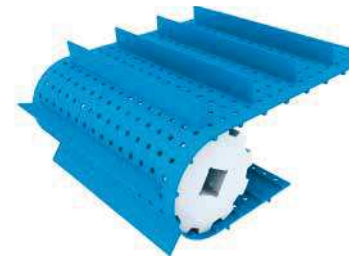
## TROUGH CONFIGURATION

The flexibility and tension-free operation of the conveyor DEL/DRIVE® and POSITIVEBELT® belts allow special configurations that are not feasible with modular belts, such as trough configuration.



## PERFORATIONS

Perforated belts facilitate drainage of transported products. Material can be perforated on request to varying diameters.



## DRIVING DRUM

The driving drum on DEL/DRIVE® or POSITIVEBELT® belts reduces the footprint of conveyors and makes cleaning easier.

Solution 1: Smooth drum fitted with HDPE sprockets on stainless steel bushing (DEL/DRIVE® and POSITIVEBELT®).

Solution 2: Drum with profiled lagging in polyurethane (DEL/DRIVE®).



Solution 1



Solution 2

## RETAINING CLIP

The retaining clip locks the sprockets, wheels and disks laterally on a square 40x40 mm shaft.



# JOINING METHODS



## BUTT WELDING

With sets of plates adapted for the tables, the welding tools for thermoweldable homogeneous belts can join DEL/DRIVE® 50, DEL/DRIVE® 25 and POSITIVEBELT® end to end while at the same time respecting the spacing.

Easy to handle, easy and quick to joint in the workshop and on site.



REFERENCE	MAX. WIDTH (mm)	WATTAGE (WATT)	VOLTAGE (V)
KITSOUDURED400	400	615	220
KITSOUDURED650	650	900	220
KITSOUDURED1100	1100	1450	220



The welding kit comprises:

- A heater bar
- A welding table
- Instructions
- Accessories
- A plastic case on caster wheels

REFERENCE	MAX. WIDTH (mm)	PRODUCT	VISUAL
PLAQMD400-DD25	400	DEL/DRIVE® 25	
PLAQMD650-DD25	650		
PLAQMD1100-DD25	1100		
PLAQMD400-DD50	400	DEL/DRIVE® 50	
PLAQMD650-DD50	650		
PLAQMD1100-DD50	1100		
PLAQMD400-PO1	400	POSITIVEBELT® PO1	
PLAQMD400-PO	400	POSITIVEBELT® PO2	
PLAQMD650-PO	650		
PLAQMD1100-PO	1100		

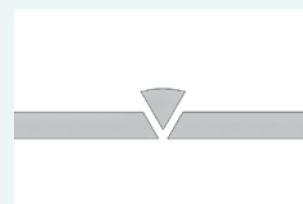
## PRESS JOINTING

Serrated jointing of the DEL/SYNC®.  
Cut with special tooling.  
Compatible 5-bar press – Heating length 180 mm.



## HOT AIR WELDING

Butt welding possible with welding seam.  
Hot air welding also allows welding of profiles and belt repairs in situ in the event of snags.





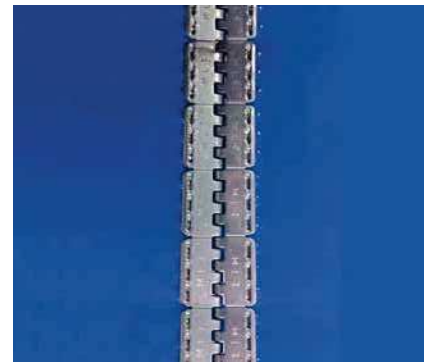
# MECHANICALLY FASTEN JOINS

The DEL/DRIVE® 50 and POSITIVEBELT® conveyor belts can be jointed with mechanically fasten joins in case of frequent mounting/dismantling or repairs.

The clips facilitate removal of the belt by removing the spindle between the 2 ends for quick dismantling and cleaning of the belt and conveyor.

## STAINLESS STEEL CLIPS

- Removable joint comprising 2 half-clips with stainless steel spindle.
- For belts 1.5 mm to 5 mm thick.
- Suitable for all widths.
- Using normal mechanical fastening technics



## PLASTIC CLIPS

- Suitable for all homogeneous (polyurethane or polyester) belts.
- Particularly suitable in metal detecting applications.
- Up to 1100 mm wide.
- Recommended for pulley diameter higher than 120 mm.

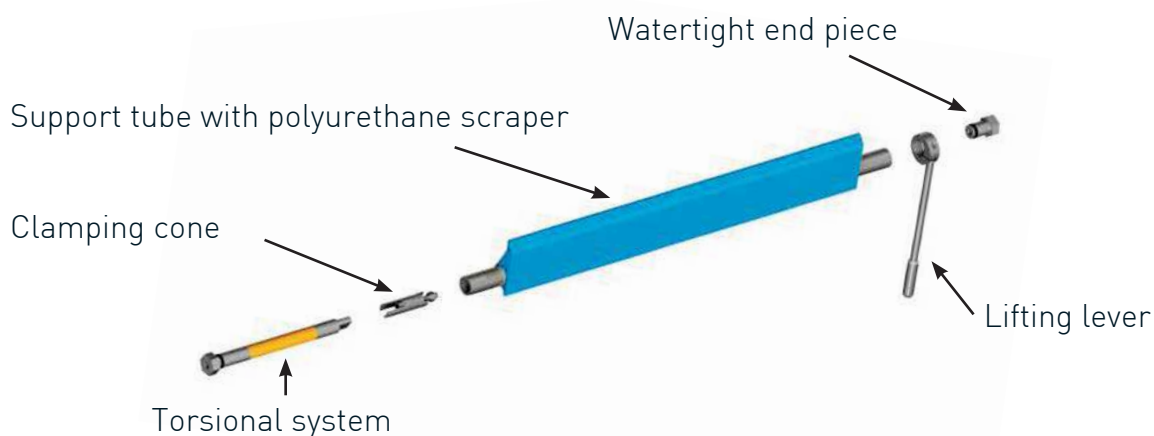


# SCRAPER



The DEL/CLEAN scraper efficiently cleans the belt, ensuring permanent cleanliness of conveyor belts and avoids:

- clogging up the conveyor
- staining conveyed materials
- loss of materials

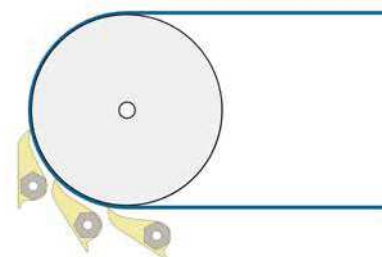


The DEL/CLEAN scraper offers many benefits:

- Small footprint
- No lateral misalignment
- Easy and quick to mount
- Can be adapted to existing or new installations
- Fits all types of conveyor belts
- Easy to clean
- Easier maintenance
- High resistance to hydrolysis: Ether base
- High resistance to abrasion: Ester base



The position of the scraper may vary depending on the need of recover the product.



SCRAPER REFERENCE	TUBE	SCRAPER			TORSIONAL SYSTEM REFERENCE	
	Ø (MM)	Height (mm)	Width (mm)	Colour	Single	Reinforced
NT70-22-W	22	70	300 to 1100	White	ST22-S	ST22-R
NT70-22-B				Blue		
NT100-27-W	27	100	400 to 1500	White	ST27-S	ST27-R
NT100-27-B				Blue		

# APPLICATIONS

