

S.25-420

Ideal for medium weight transportation etc.
Transport of small products, such as bottles,
glass and machine components.
FDA approved



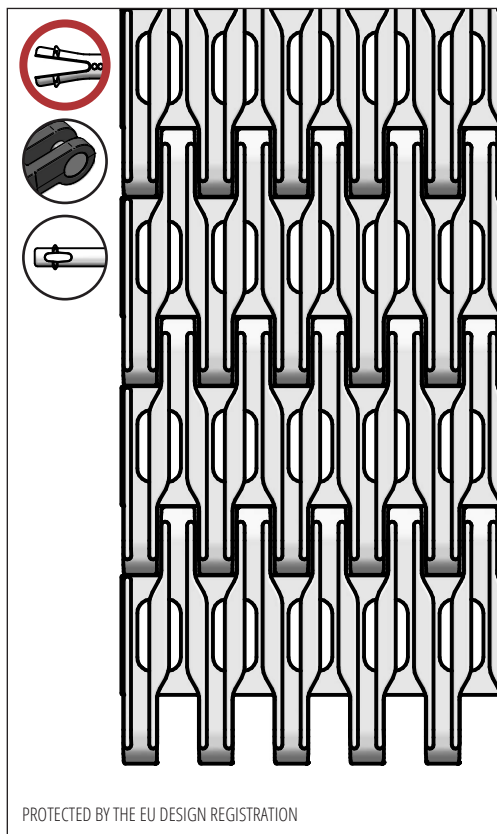
SCANBELT
...keeping industry moving...

SUGGESTED INDUSTRIES



STANDARD FEATURES

Belt surface	Raised ribs 5 mm, drained
Open area	14 %. Biggest opening 10 x 2 mm
Strength	Ideal for medium weight transportation
Cleanability	Excellent. FSIS
Standard width	Increments of 20 mm, e.g. 100 mm, 120 mm etc.



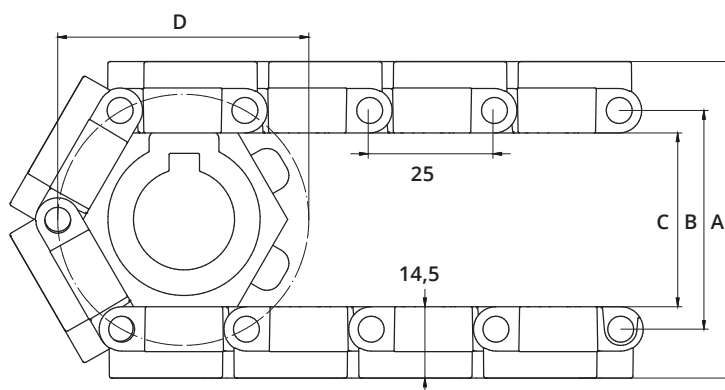
PROTECTED BY THE EU DESIGN REGISTRATION

BELT DATA

Belt materials	Temperature range		Max. belt pull kg/m of width	Belt weight kg/m ²	Belt weight kg/m ² w. steel rods	Standard Colours
	Min.	Max.				
PE	- 73	66	900	8	13,5	Blue/Natural
PP	+ 5	100	1200	8	13,5	Blue/White/Grey
POM	- 43	95	2400	11	16,5	Blue/Natural

ACCESSORIES

Type	mm
Flights	-
Scoop Flights	-
Bent Flights	-
Supported Flights	-
Flights fitted with a Round Top	Yes
Side Guards	-
Finger Transfer Plates	Yes
Hold-downs	Yes



SPROCKET DATA

A = Outside, B = Pitch, C = Inside, D = Pitch Circle Diameter

No. Teeth	A	B	C	D	Hub Width	Round Bore		Square Bore	
	mm	mm	mm	mm		mm	Inch	mm	Inch
6	65	45	36	52	20	20			
8	82	62	53	66	20	20 / 25	1	25	
12	116	96	87	99	20	20 / 25 / 30 / 40	1 / 1¼	25 / 40	1½
20	182	162	153	164	35	25 / 30 / 40	1 / 1¼	25 / 40 / 60	1½ / 2½