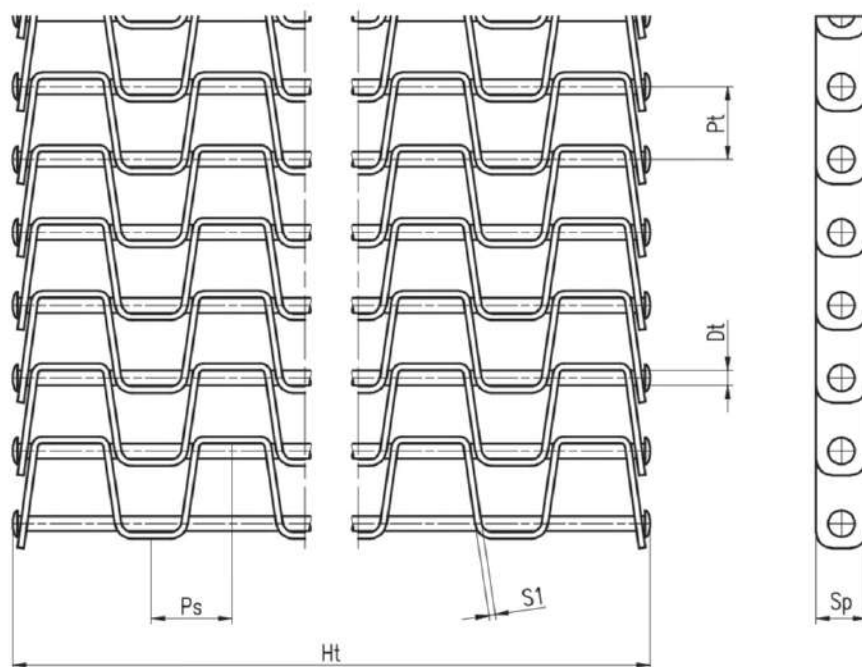
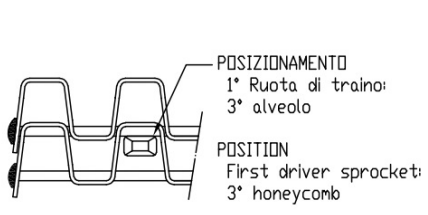


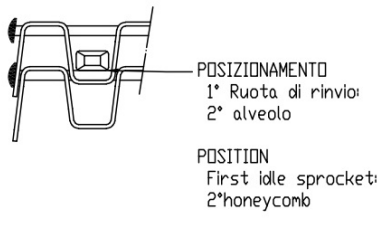
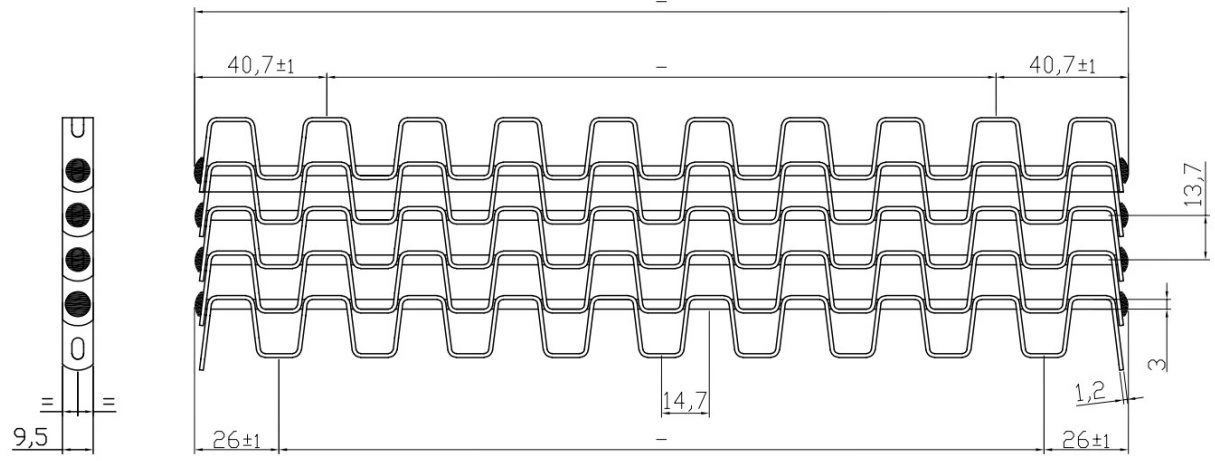
NASTRI GRECATI



Tipo	Pt	Ps	Dt	Ht	Sp	S1



SENSO DI MARCIA
DIRECTION

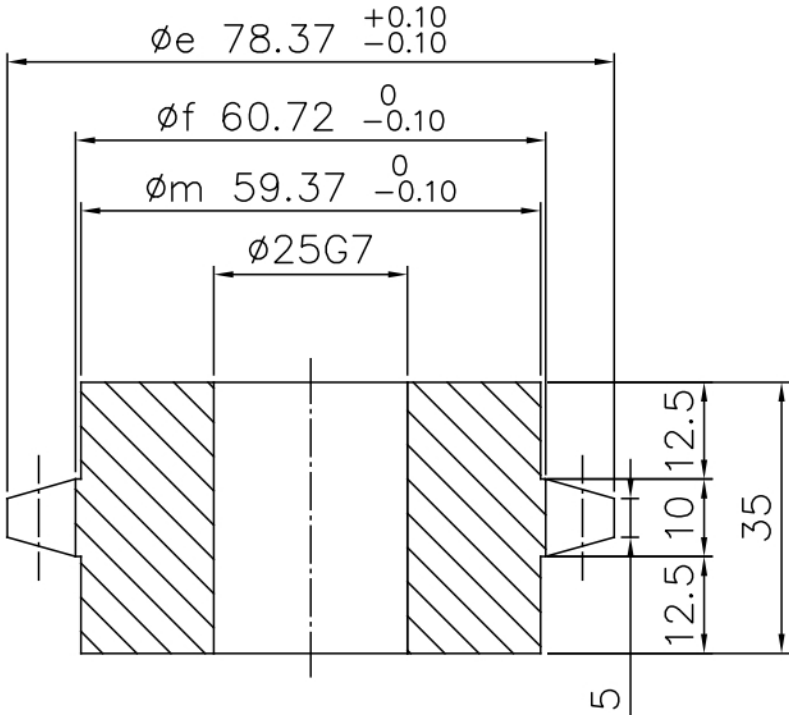
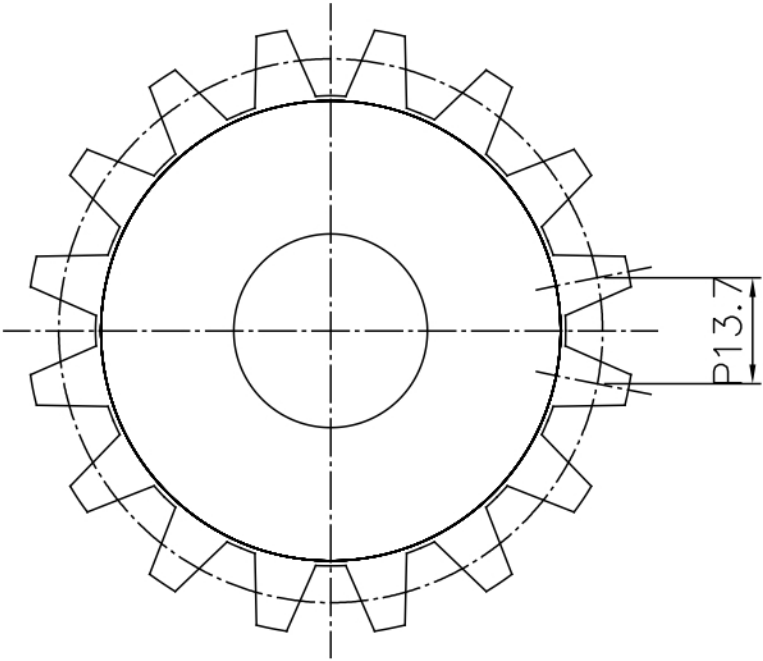


Rev. 3	Rev. 2	Rev. 1	0	0				
			Pos.	Q.ta'	Denominazione	Materiale	Trattam.	UNI / note
			GP 13,7-14,7-9,5x1,2-3				Scala	i1
					Disegnato			
					Data	19/07/2017		
					sistema E UNI 3970			
					DISEGNO N° GP		Rev. 0	

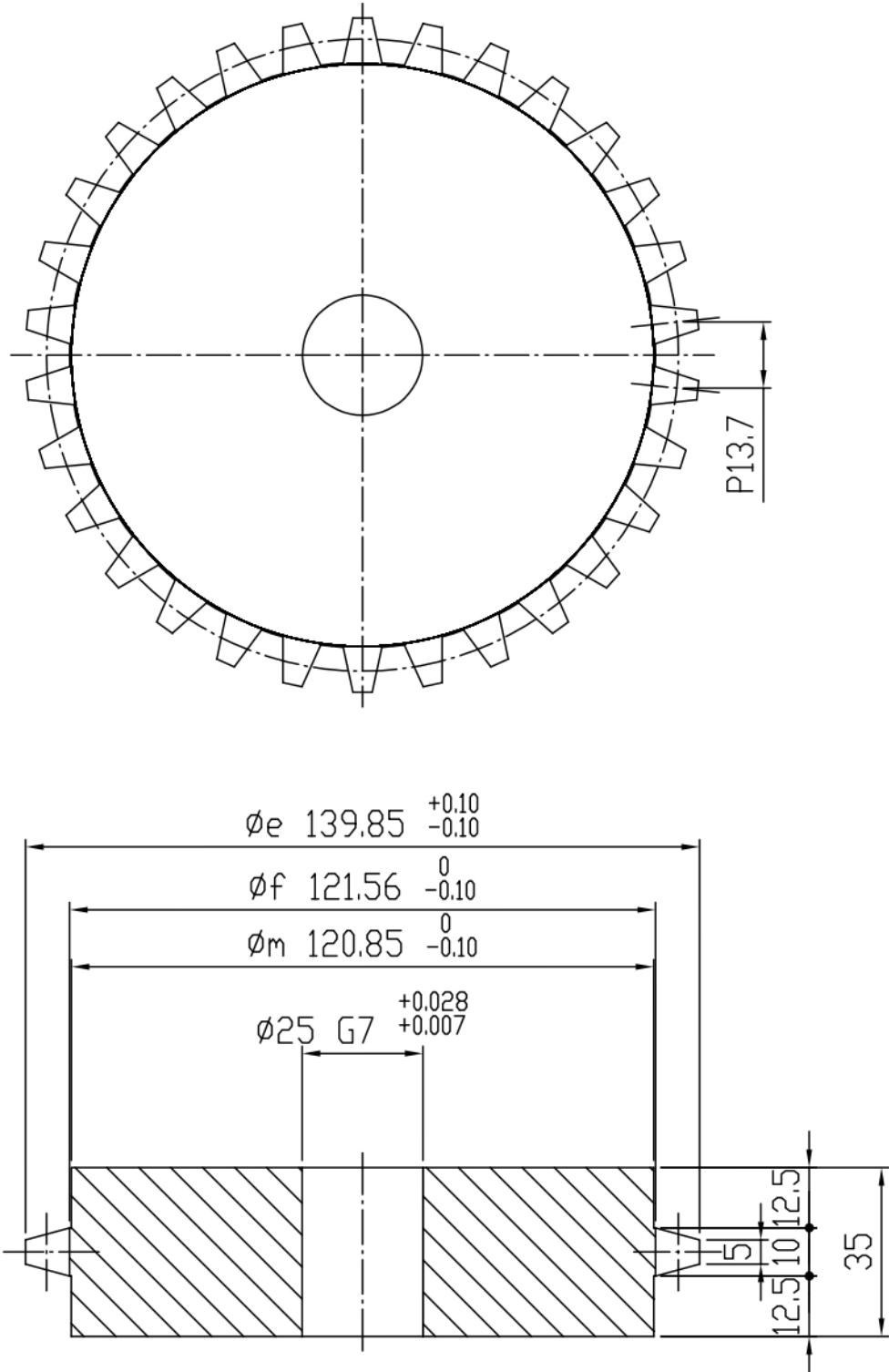
Ruota dentata P.13,7 Z=16 $\phi_p.70,22$

Foro $\phi 25G7$

Ld.10/5 Sp.tot.= mm35



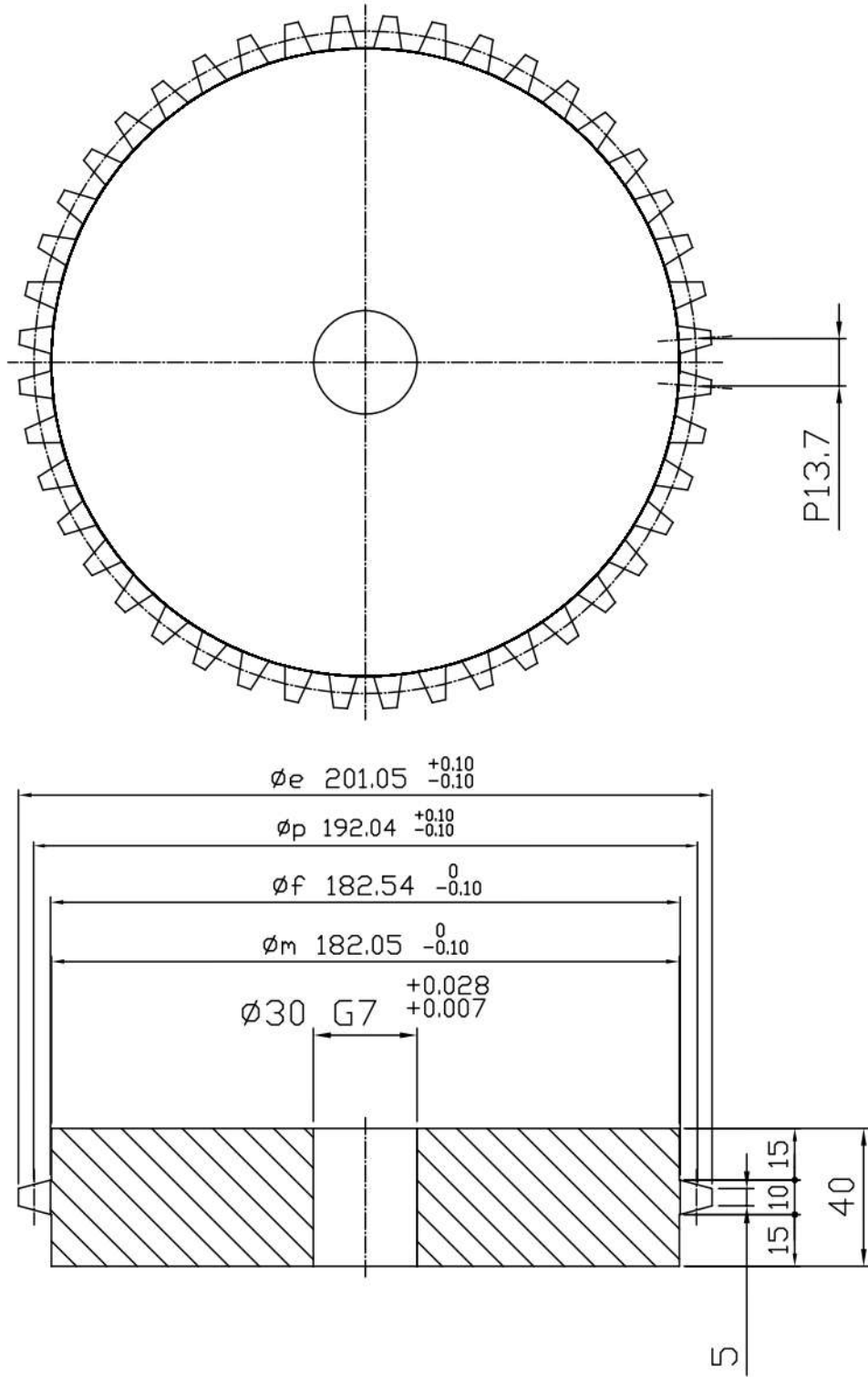
Ruota dentata P.13,7 Z=30 ϕ_p 131,06
Foro ϕ 25G7
Ld.10/5 Sp.tot.= mm35

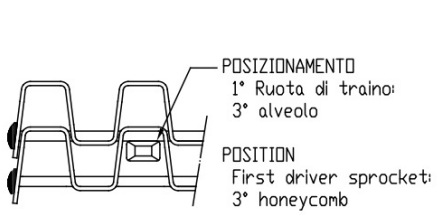


Ruota dentata P.13,7 Z=44 ϕ_p .192,04

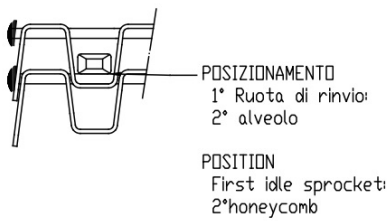
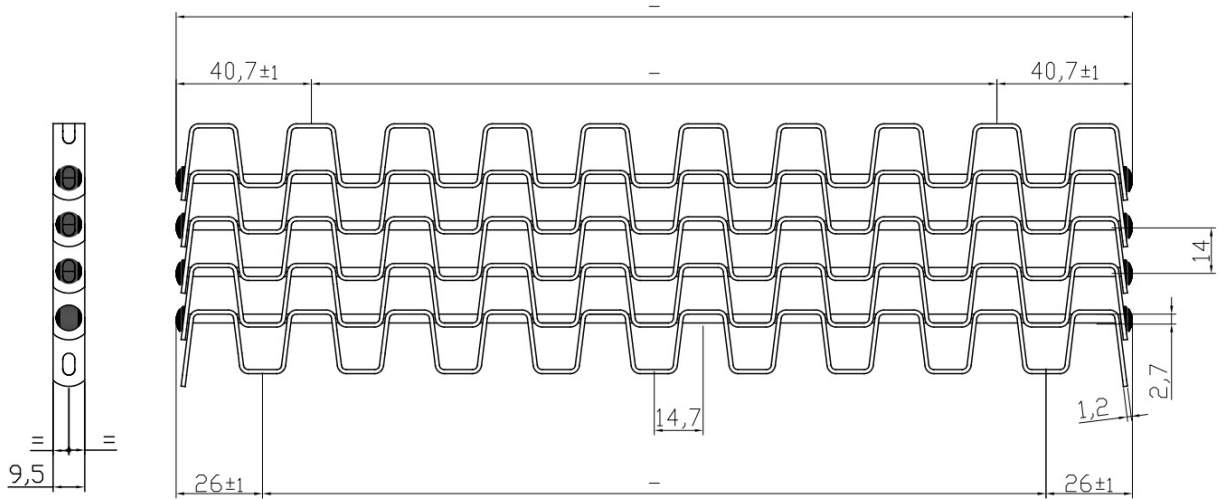
Foro ϕ 30G7

Ld.10/5 Sp.tot.= mm40





SENSO DI MARCIA
DIRECTION

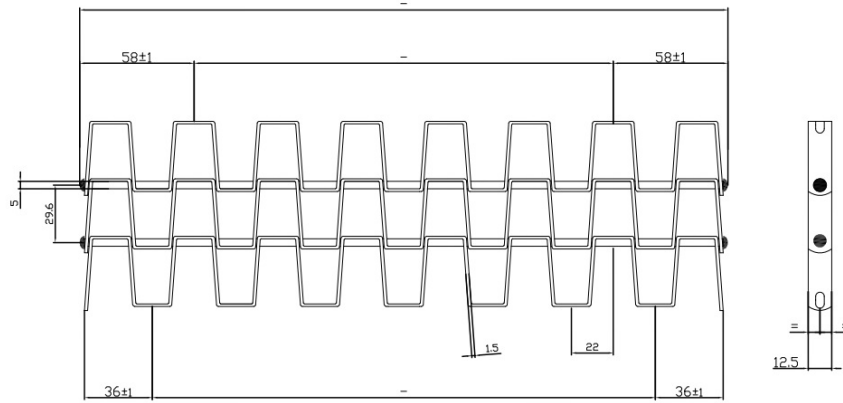


Rev. 3	Rev. 2	Rev. 1	0	0					
			Pos.	Q.ta'	Denominazione	Materiale	Trattam.	UNI / note	
			GP 14-14,7-9,5x1,2-2,7				Scala	1:1	
						Disegnato			
						Data	29/05/2017		
						sistema E UNI 3970			
							DISEGNO N°	GP	Rev. 0

POSIZIONAMENTO
1° Ruota di traino:
3° alveolo

POSITION
First driver sprocket:
3° honeycomb

SENSO DI MARCIA
DIRECTION



POSIZIONAMENTO
1° Ruota di rinvio:
2° alveolo

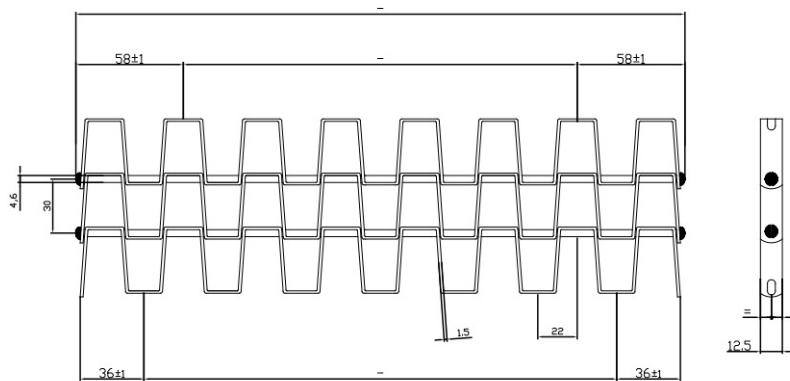
POSITION
First idle sprocket:
2° honeycomb

Rev. 3	Rev. 2	Rev. 1	0	0				
			Pos.	Q.ta'	Denominazione	Materiale	Trattam.	UNI / note
			GP 29,6-22-12,5x1,5-5				Scala	i1
					Disegnato			
					Data	15/09/2017		
					sistema E UNI 3970			
					DISEGNO N° GP			Rev. 0

POSIZIONAMENTO
1° Ruota di traino:
3° alveolo

POSITION
First driver sprocket:
3° honeycomb

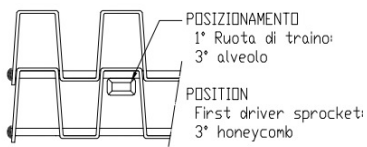
SENSO DI MARCIA
DIRECTION



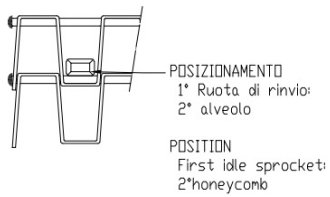
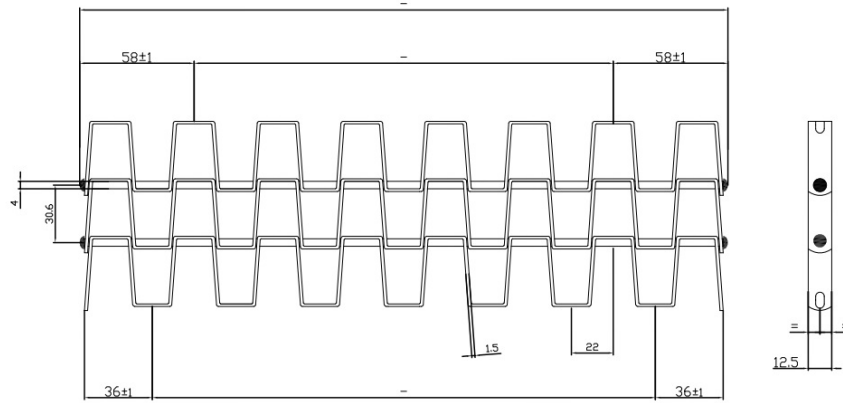
POSIZIONAMENTO
1° Ruota di rinvio:
2° alveolo

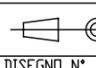

POSITION
First idle sprocket:
2° honeycomb

0	0				
Pos.	Q.ta'	Denominazione	Materiale	Trattan.	UNI / note
				Scala	1:1
				Disegnato	
				Data	15/09/2017
		GP 30-22-12,5x1,5-4,6			sistema E UNI 3970
Rev. 3	Rev. 2	Rev. 1		DISEGNO N° GP	Rev. 0

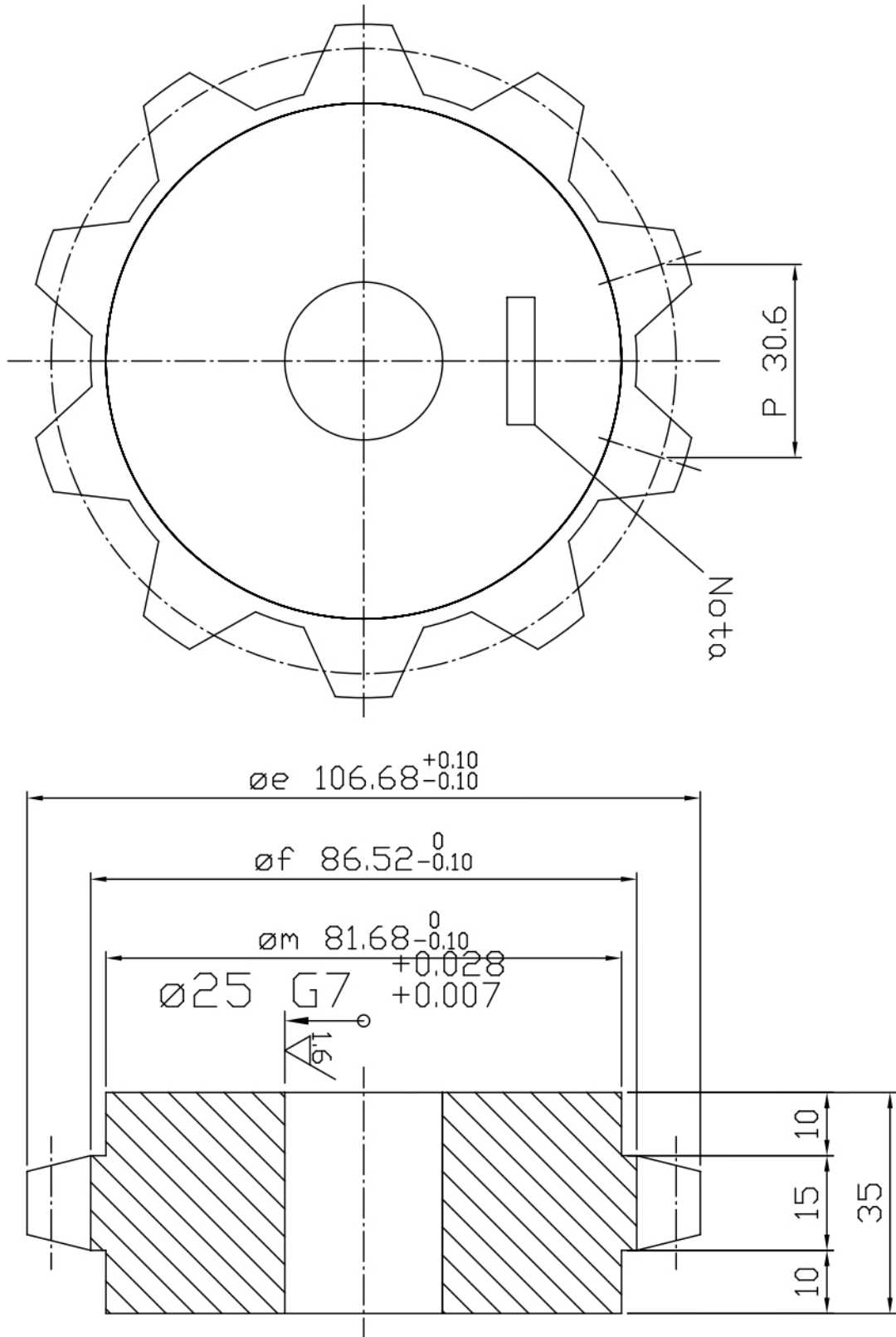


SENSO DI MARCIA
DIRECTION



Rev. 3	Rev. 2	Rev. 1	0	0					
			Pos.	Q.ta'	Denominazione	Materiale	Trattam.	UNI / note	
			GP 30,6-22-12,5x1,5-4				Scala	i1	
					Disegnato				
					Data	15/09/2017			
					 sistema E UNI 3970				
					DISEGNO N°  GP			Rev. 0	

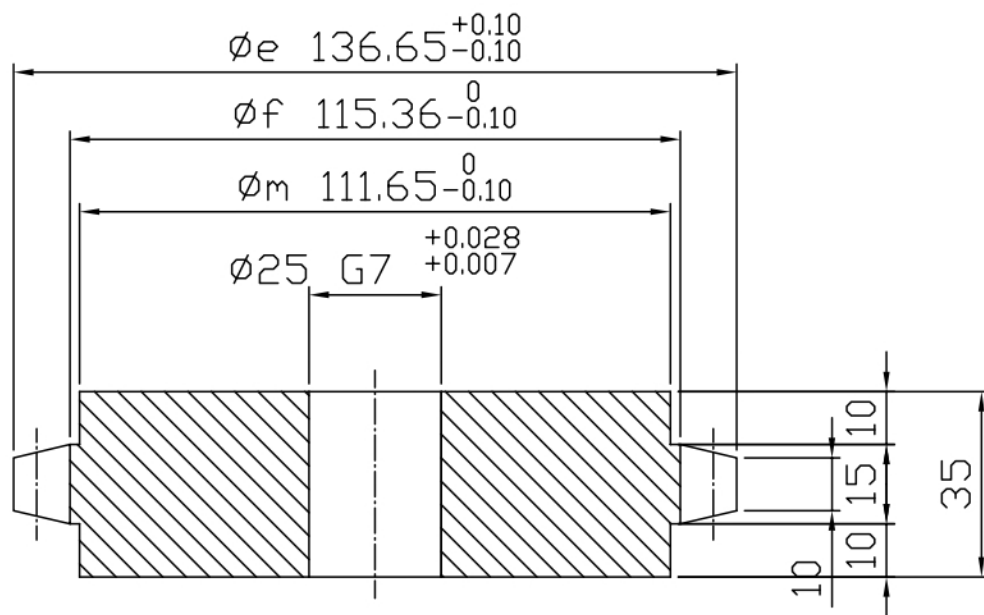
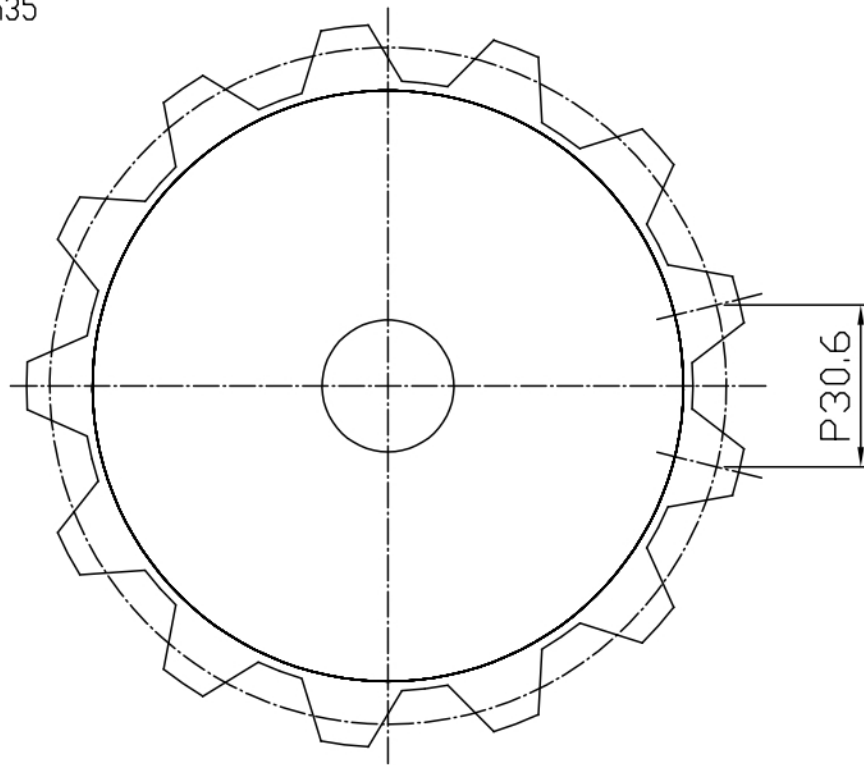
RUOTA DENTATA P=30,6 Z=10
C45 \varnothing . 25 G7
Spessore totale 35 mm



Ruota dentata P.30,6 Z=13 ϕ_p .127,86

Foro $\phi 25$ G7

Ld15/10 Sp.tot.= mm35



Ruota dentata P.30,6 Z=20 ϕ_p 195,61
Foro ϕ 30G7
Ld.12/8 Sp.tot.= mm40

