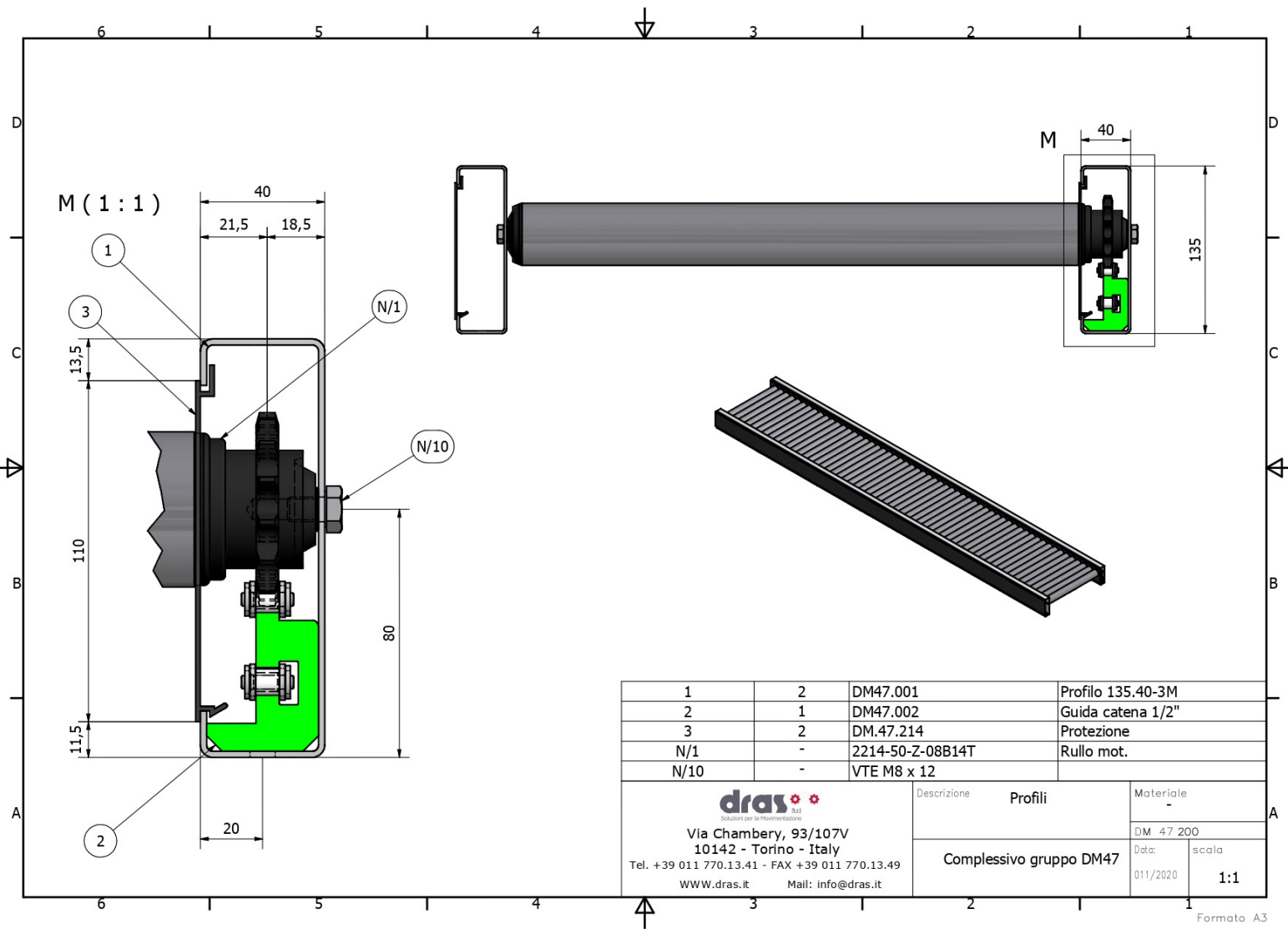


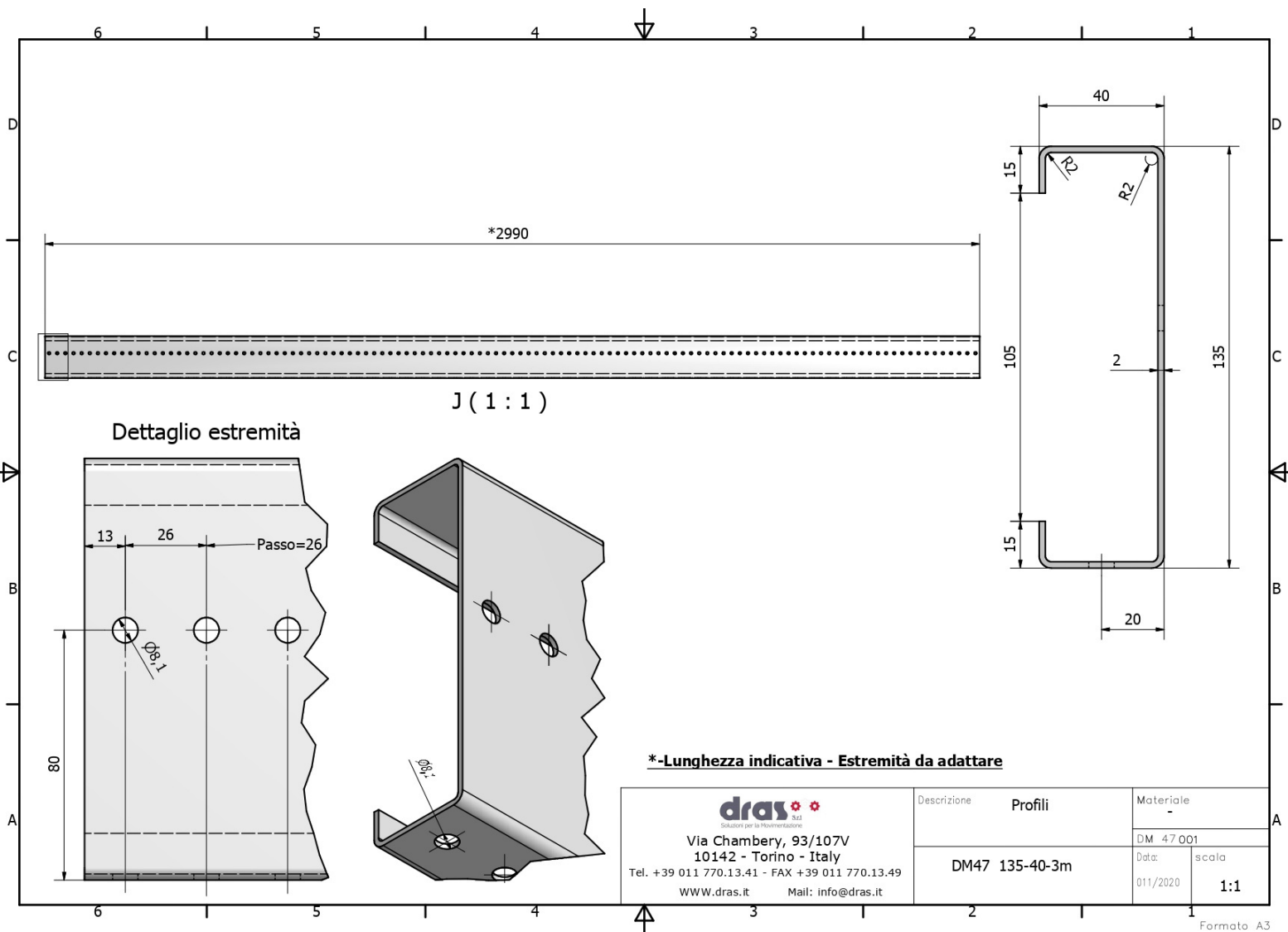
RULLIERA con profilo PVC rigato

Rulliera composta da: Profilo in acciaio, Guida catena in P.E., Catena 08B1, Rulli motorizzati con pignone semplice in plastica o in acciaio Z14, Profilo laterale in PVC rigato, Tappo chiusura zincato



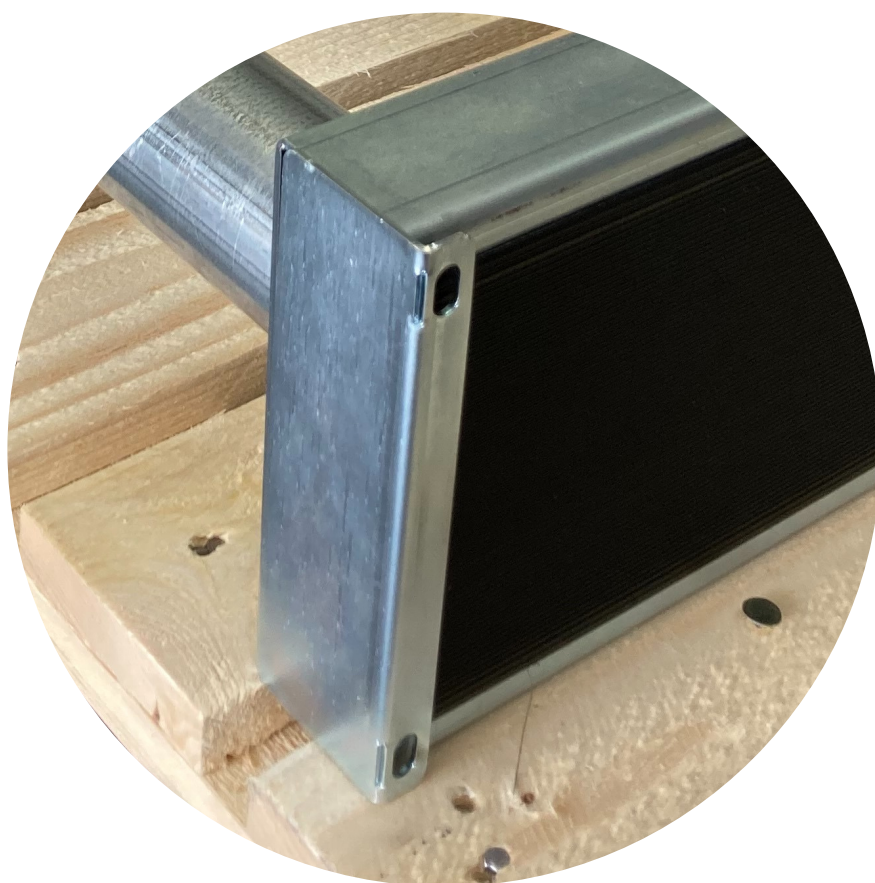
PROFILO IN ACCIAIO

Profilo in acciaio zincato lunghezza 2990mm
Lunghezza a partire da 78mm
Incrementabile a multipli di 26mm (78mm, 104mm, 130mm, 156mm, ...)



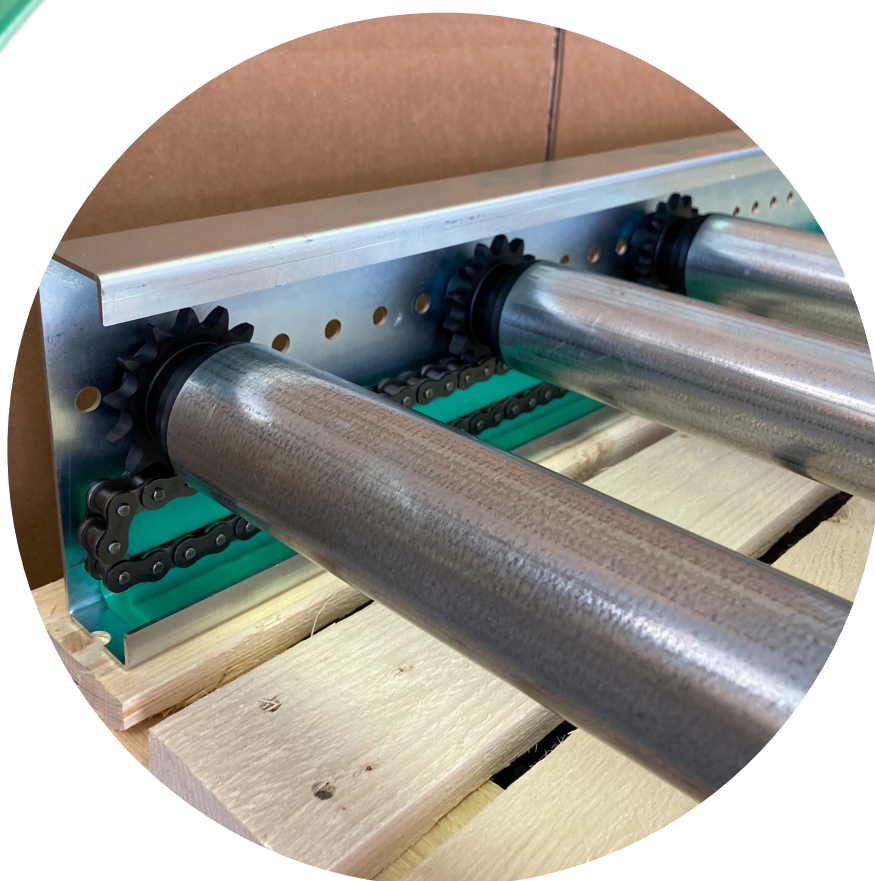
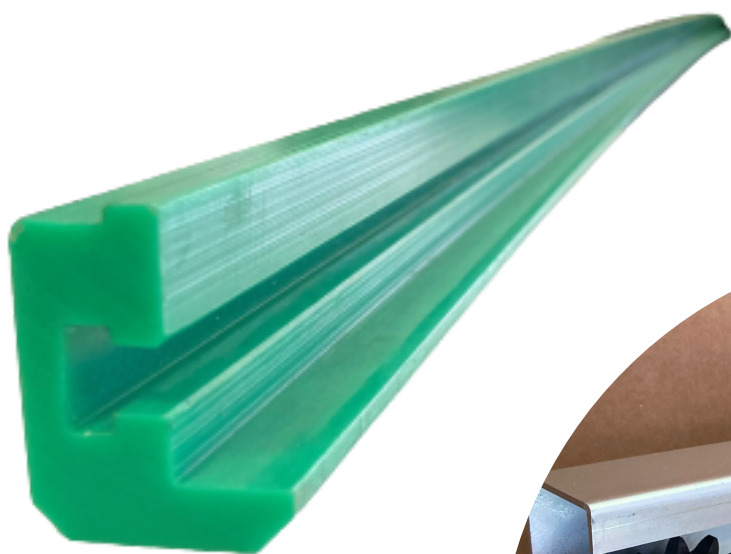
TAPPO DI CHIUSURA

Tappo di chiusura zincato con asole per
fissaggio



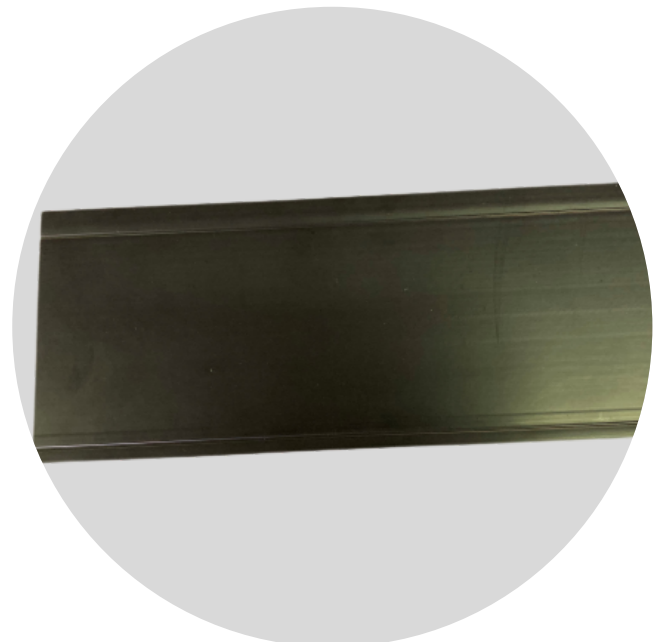
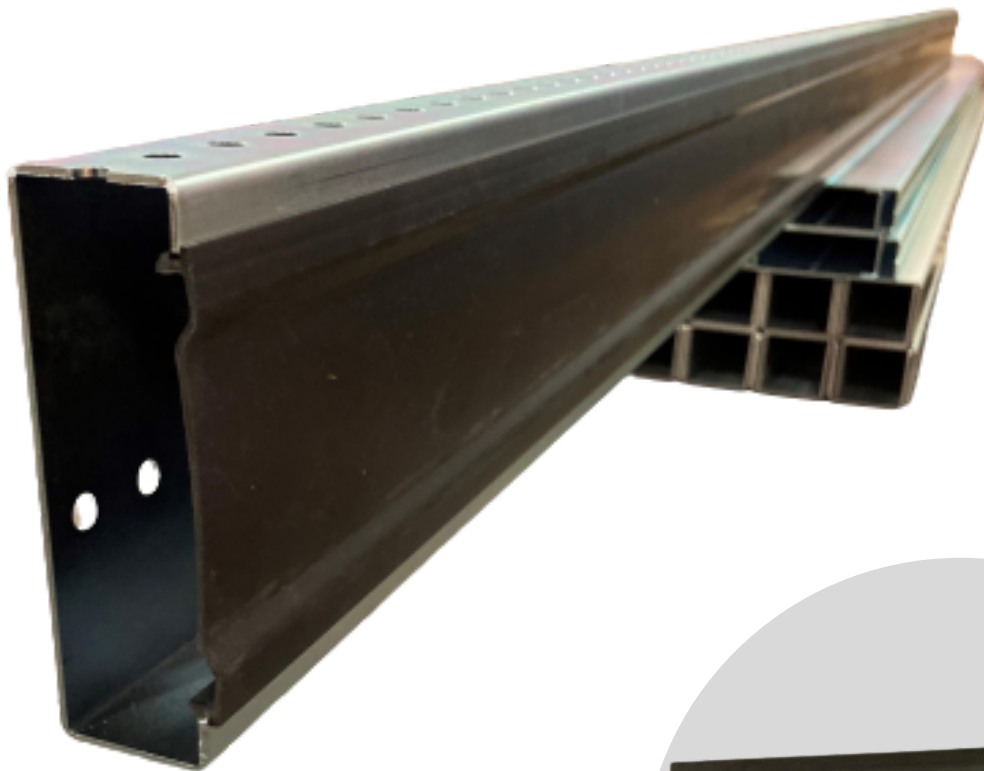
GUIDA CATENA IN P.E.

Guida catena lunghezza 2000mm per catena
08B1 pignone Z14



PROFILO PVC LISCIO

Profilo PVC lunghezza 2990mm



PROFILO PVC RIGATO

Profilo PVC lunghezza 2990mm

