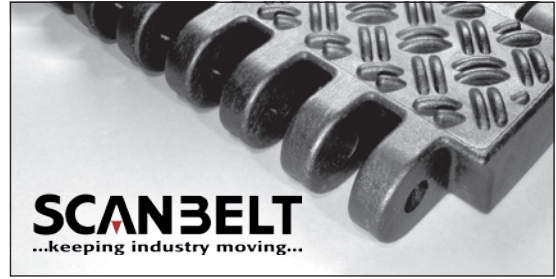
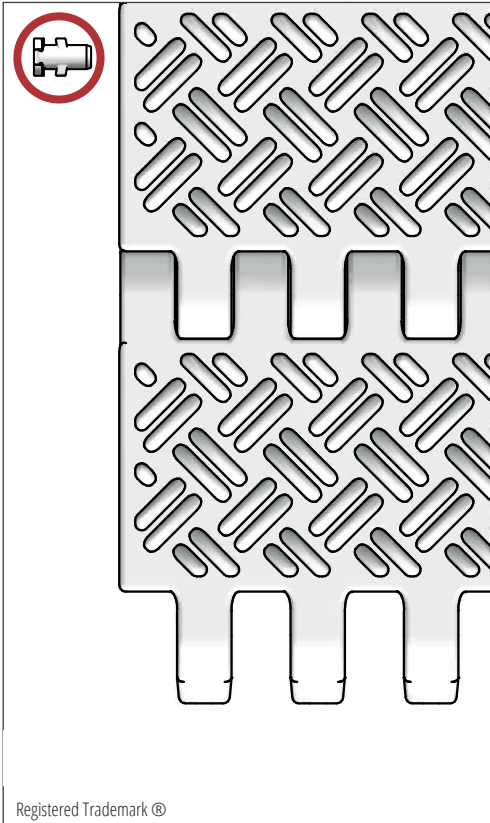


S.75-938

Very heavy transportation. Assembling belt for carsand truck loading systems.
FDA approved



SCANBELT
...keeping industry moving...



Registered Trademark ©

SUGGESTED INDUSTRIES



STANDARD FEATURES

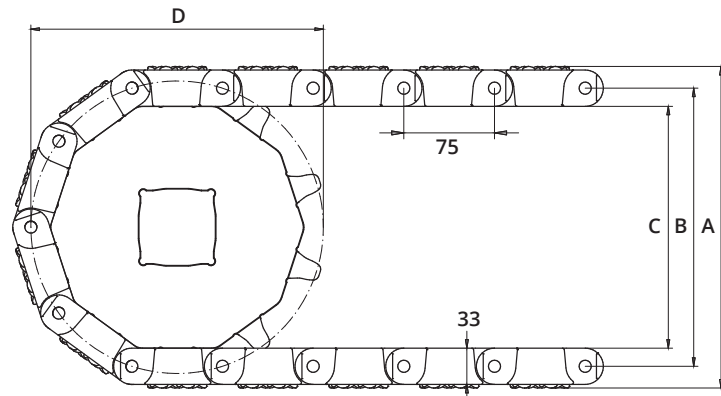
Belt surface	Closed with 3 mm non-skid pattern
Open area	Closed
Strength	Ideal choice for light transportation
Cleanability	Excellent. FSIS
Standard width	Increments of 20 mm, e.g. 100 mm, 120 mm etc.
Also available as	Module with 40 mm indent

BELT DATA

Belt materials	Temperature range		Max. belt pull kg/m of width	Belt weight kg/m ²	Belt weight kg/m ² w. steel rods	Standard Colours
	Min.	Max.				
PE	-	-	-	-	-	-
PP	+5	100	10.000	22	30	Black
POM	-43	95	16.000	33	41	Black/Yellow

ACCESSORIES

Type	mm
Flights	-
Scoop Flights	-
Bent Flights	-
Supported Flights	-
Comb Flights	25, 50, 60
Flights fitted with a Round Top	-
Side Guard	-
Friction Top	-
Hold-downs	-



SPROCKET DATA

A = Outside, B = Pitch, C = Inside, D = Pitch Circle Diameter

No. Teeth	A	B	C	D	Hub Width	Round Bore		Square Bore	
	mm	mm	mm	mm		mm	Inch	mm	Inch
12	316	280	250	288	50	40 / 60		60 / 80 / 90	